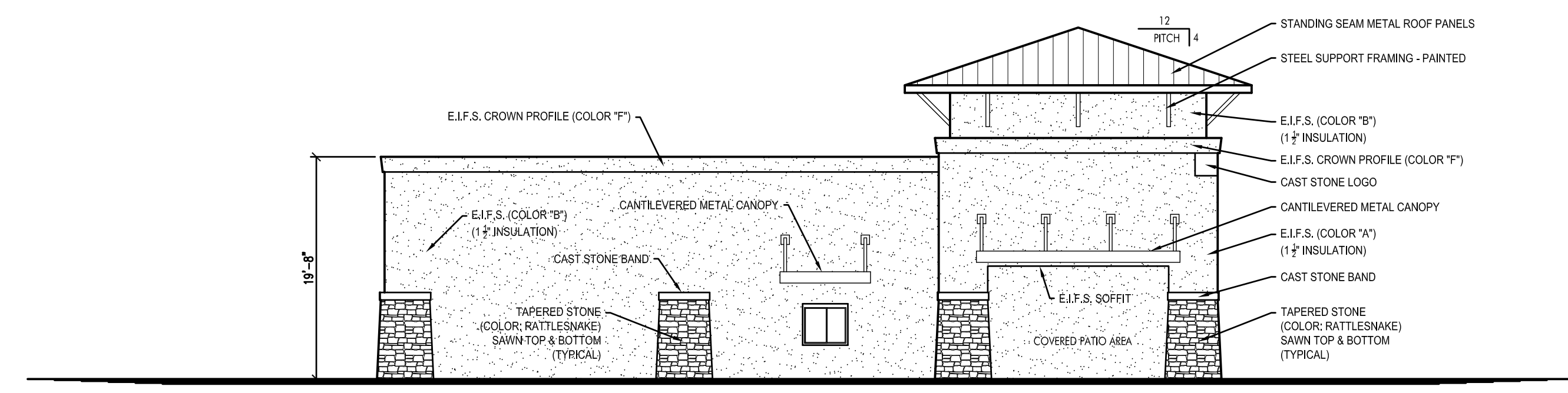
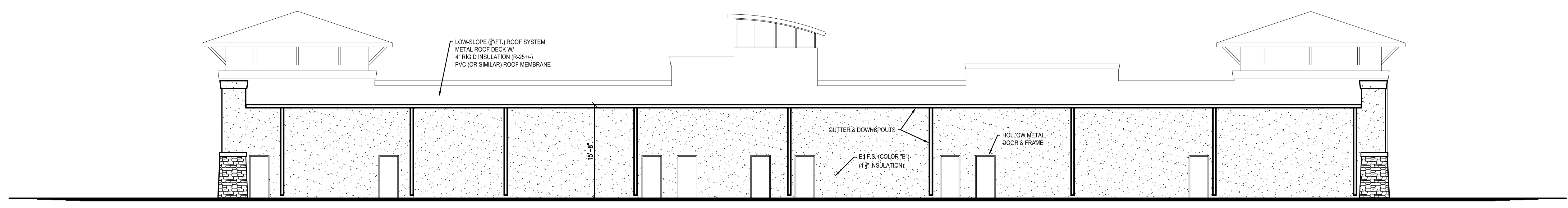


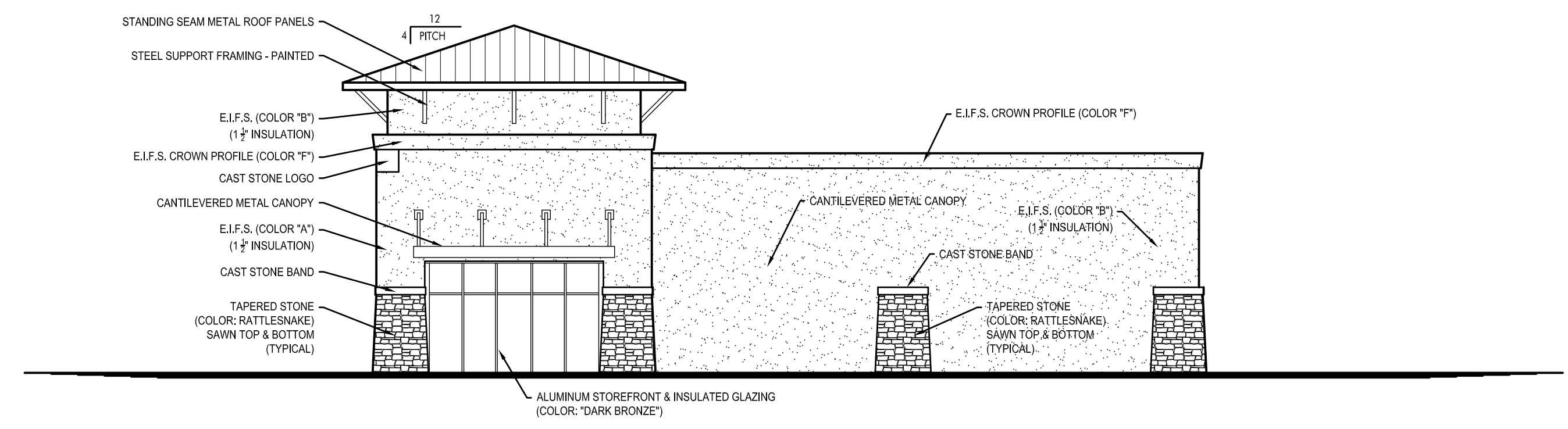
1 PRELIMINARY SOUTH ELEVATION
1/8" = 1'-0"



2 PRELIMINARY WEST ELEVATION
1/8" = 1'-0"



3 PRELIMINARY NORTH ELEVATION
1/8" = 1'-0"



4 PRELIMINARY EAST ELEVATION
1/8" = 1'-0"